

# Contemporary Art of the SOUTHWEST



Schiffer

**E. Ashley Rooney**

With Julie Sasse



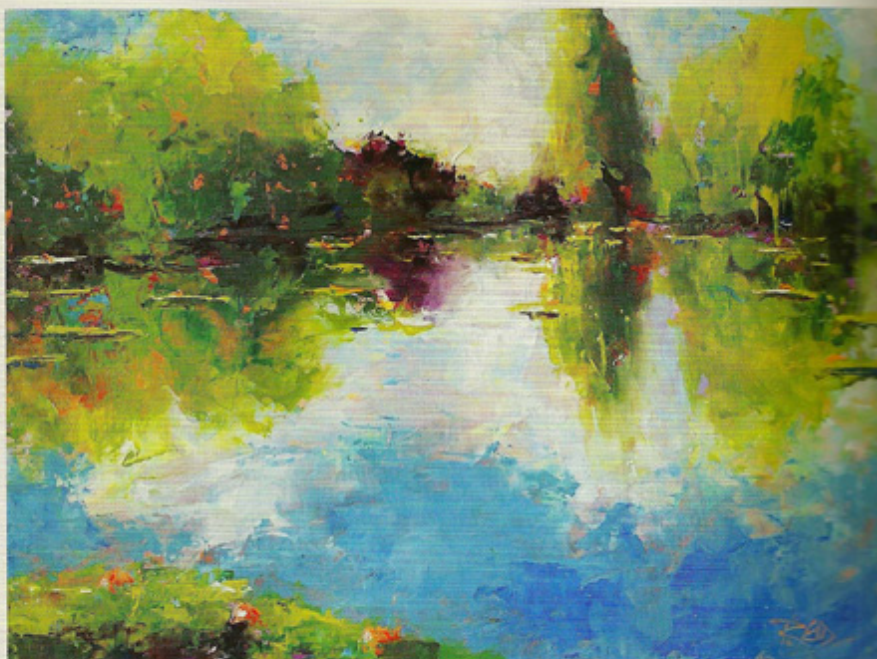
## Cynthia Reid

Tucson, Arizona

Using a large palette knife, I pick up a combination of light cadmium red and yellow paint and apply it thickly on a canvas. It will provide texture and color to a painting with a bit of an edge. I am fascinated by the luminous glow and depth of oil paints and tend to infuse my art with the intense sun-splashed colors of Tucson, my adopted city.

Twelve years ago, my work wasn't so creative. My days as a pathologist in a North Carolina hospital were spent in a windowless office. Intrigued and challenged by my work, I felt as if I was helping people, but my self-expression was limited. As a result, any free time was spent taking art classes, and I began to rethink my career as a physician. In 2000, I left medicine to pursue my passion for painting.

Inspiration for my art is found in gardens and landscapes throughout the United States, Canada, and Europe. Windows often are referenced as a vehicle for seeing and interacting with the world. Using a contemporary impressionist style, I tend to leave the initial stages of the painting visible to allow the story of its creation to unfold.



*Quiet Morning.* Oil on panel.  
12 x 16". 2010.





*Blue Vase.* Oil on mounted canvas. 20 x 16." 2009.



*Beautiful Day.* Oil on canvas. 30 x 40". 2011.



*Late Morning Light.* Oil on panel. 12 x 12". 2010.



*Hotel Window Boxes.* Oil on canvas. 24 x 30". 2008.